

NISSAN

J U K E



# STANDARD EQUIPMENT

The Nissan Juke catches the eye from every angle. Its dynamic design and sporty styling make a powerful statement wherever it goes. Advanced technology - including ProPILOT Assist, Bose® Personal® Plus and NissanConnect - will help keep you safe, connected and entertained for thrilling urban adventures.

## ALL JUKES COME WITH:

### EXTERIOR STYLING

- Rear Spoiler

### INTERIOR STYLING

- Monoform sporty seats
- Height adjustable driver seat
- Driver and passenger sun visor with vanity mirrors
- Welcome Light & Console Tray Ambient Lighting
- Cabin light Front and Rear
- Luggage space lighting
- 3 adjustable rear head restraints
- 60:40 split folding rear seats
- Front doors with bottle holders
- Two cupholders in the centre console
- Manual dimming interior rear view mirror

### AUDIO AND NAVIGATION

- DAB Radio Bluetooth® connectivity, USB and AUX-IN ports

### COMFORT AND CONVENIENCE

- Cruise Control & Speed Limiter
- Telescopic Steering wheel adjustment
- Multifunctional Steering wheel
- Front and rear electric windows with One Touch Driver window
- Outside temperature sensor
- Idle Stop/Start System
- Electrically adjustable Door Mirrors with integrated indicators
- Drive & passenger sliding and reclining seats
- Push-push fuel lid

### SAFETY AND SECURITY

- Intelligent Emergency Braking with Pedestrian & Cyclist Recognition\*
- Lane Departure Warning\*
- Intelligent Lane Intervention\*
- High Beam Assist\*
- Traffic Sign Recognition\*
- Automatic Hazard Signal + Emergency Stop signal
- Driver, passenger, side and curtain airbags

- Height adjustable seat belts
- Two rear ISOFIX childseat anchorage points with "Top tether"
- Tyre Pressure Monitoring System (TPMS)
- ABS with EBD and Brake Assist
- Vehicle Dynamic Control
- Electronic Stability Programme (ESP)
- Active Trace Control\*
- Active Ride Control\*
- Hill Start Assist
- Driver/Passenger & Rear seat belts reminder
- Puncture repair kit
- Emergency and Breakdown Call

### VENTILATION AND VISIBILITY

- LED headlamps
- LED rear lamps
- LED Daytime Running Lights
- LED rear fog lamp
- Three Blink Turn Signal
- Follow me home headlights
- Manual air conditioning

# ACENTA PREMIUM

## IN ADDITION TO STANDARD EQUIPMENT

### EXTERIOR STYLING

- 17" Sakura wheels
- Grained black plastic exterior door handles
- Exterior mirrors painted solid black
- Black shark fin antenna

### INTERIOR STYLING

- Front monoform sporty design seat with integrated headrest
- Black – cloth seats
- Synthetic Leather steering wheel

### AUDIO AND NAVIGATION

- NissanConnect 12.3" Touchscreen Entertainment System
- Wireless Apple CarPlay® + Android Auto™

- 4 speakers (Front door x2, Rear doors x2)
- 7" Colour TFT Combimeter screen
- 4 USB ports (2x Front, 2x Rear)
- WiFi and Voice Recognition\*

### COMFORT AND CONVENIENCE

- Rear view camera
- Steering wheel mounted gearshift paddles (DCT transmission only)
- Electric hand brake with Auto Hold Function
- Start push button (Hybrid only)
- e-Pedal STEP (Hybrid only)
- EV mode switch (Hybrid only)
- Regenerative braking (Hybrid only)

### SAFETY AND SECURITY

- Emergency and Breakdown Call

### OPTIONS\*

- Comfort Pack:
  - Automatic Climate Control
  - Rain sensing wipers
  - Heated Front seats
  - Heated & Auto-folding mirrors



\* Options available at additional cost

# N-CONNECTA

## IN ADDITION TO ACENTA PREMIUM

### EXTERIOR STYLING

- 17" Black & Diamond Cut Alloy Wheels
- Privacy Glass

### INTERIOR STYLING

- Front Armrest
- Synthetic Leather Shift Knob
- Card holder on Driver Sun Visor
- Black Syntech Leather seats with Melange Fabric inserts
- Ambient Lighting
- Technical grain PVC dashboard
- Manual dimming framed rear view mirror

### AUDIO AND NAVIGATION

- 6 speakers (Front doors x2, Front tweeters x2, Rear doors x2)
- 12.3" colour TFT Combimeter screen
- NissanConnect navigation with TomTom Traffic
- Wireless phone charger
- NissanConnect Services

### COMFORT AND CONVENIENCE

- Front Parking sensors
- Rear parking sensors
- Luggage Board
- Heated & Auto-folding mirrors
- Start push button
- Intelligent Key with Walk Away Lock and Approach Unlock functions
- Drive Modes (Sport, Normal, Eco)

### VENTILATION AND VISIBILITY

- Automatic Climate Control
- Rain sensing wipers

### OPTIONS\*\*

- Heat Pack
  - Heated Front seats
  - Heated Steering wheel
  - ThermaClear® heated windscreen

- Height adjustable passenger seat

- Advanced Safety Shield Pack\* (Manual transmission only):
  - Intelligent Around View Monitor (360° colour camera)\*
  - Intelligent Driver Alertness\*
  - Blind Spot Intervention\*
  - Rear Cross-Traffic alert\*
  - Intelligent Cruise Control\*
  - Moving Object Detection\*
  - Lane Keep Assist\*
- ProPILOT Assist Pack\* (automatic transmission only):
  - Intelligent Around View Monitor (360° colour camera)\*
  - Intelligent Driver Alertness\*
  - Blind Spot Intervention\*
  - Rear Cross-Traffic alert\*
  - Intelligent Cruise Control\*
  - Moving Object Detection\*
  - Traffic Jam Pilot\*
  - Lane Keep Assist\*



\* You should not rely solely on driver convenience features. Some features may not work in all conditions and circumstances. Speed and other limitations apply. For terms and conditions relating to Nissan technologies, please contact your Nissan dealer or [www.nissan.co.uk](http://www.nissan.co.uk)

\*\* Options available at additional cost

# TEKNA

## IN ADDITION TO N-CONNECTA

### EXTERIOR STYLING

- 19" Alloy wheels

### INTERIOR STYLING

- Synthetic leather seats with new Quilting and headrest hole gloss Black finisher
- Height adjustable passenger seat
- Gear Console Ambient Circle Lighting
- Door Ambient Lighting
- Driver Seat Back Pockets
- Passenger Seat Back Pockets
- Automatic dimming framed interior rear view mirror

### AUDIO AND NAVIGATION

- Bose® Personal® Plus Audio System: 10 Bose® Speakers (6 speakers and 2 headrest speakers for Driver & Passenger seats)

### COMFORT AND CONVENIENCE

- Heated Front seats
- Heated Steering wheel
- ThermaClear® heated windscreen

### SAFETY AND SECURITY

- Intelligent Around View Monitor (360° colour camera)\*
- Intelligent Cruise Control\*
- Lane Keep Assist\*
- Intelligent Driver Alertness\*
- Blind Spot Intervention\*
- Rear Cross-Traffic alert\*
- Moving Object Detection\*
- Traffic Jam Pilot\* (automatic transmissions only)



\*You should not rely solely on driver convenience features. Some features may not work in all conditions and circumstances. Speed and other limitations apply. For terms and conditions relating to Nissan technologies, please contact your Nissan dealer or [www.nissan.co.uk](http://www.nissan.co.uk)

\*\* Options available at additional cost

# TEKNA+

## IN ADDITION TO TEKNA

### EXTERIOR STYLING

- 19" Alloy wheels with Deep 3D effect
- Two-Tone metallic paint
- Roof colour door mirrors
- Solid Black roof colour
- Exterior Personalisation Pack: Satin Grey inserts on front bumper, rear bumper and side skirts
- Satin silver front bumper finisher
- 19" Aero Alloy wheels (HEV only)

### INTERIOR STYLING

- Interior Personalisation Pack (seats, dashboard, door panels and armrest): "Midnight" (Black Synthetic Leather and Alcantara)



\* Options available at additional cost

# N-SPORT

## IN ADDITION TO TEKNA

### EXTERIOR STYLING

- 19" Black Akari Alloy wheels
- Two-tone metallic paint
- Roof colour door mirrors
- Solid Black roof colour
- Exterior Personalisation Pack: Gloss Black inserts on front bumper, rear Bumper and side skirts
- Satin Silver front bumper finisher

### INTERIOR STYLING

- Interior Personalisation Pack (seats, dashboard, door panels and armrest): "Icon" (Black Synthetic Leather and Yellow Alcantara)

### OPTIONS\*

- 19" Aero Alloy wheels (Hybrid only)



\* Options available at additional cost

# COLOURS

## Pearlescent Paint



Fuji Sunset Red - **NBV**



Iconic Yellow - **ECE**



Pearl White - **QBE**



Pearl Black - **GAT**

## Special Paint



Ceramic Grey - **KBY**



Magnetic Blue - **RCF**

## Metallic Paint



Gun Metallic - **KAD**

## Solid Paint



Arctic White - **326**

## TWO TONE PAINT



### SOLID BLACK ROOF

Available with:

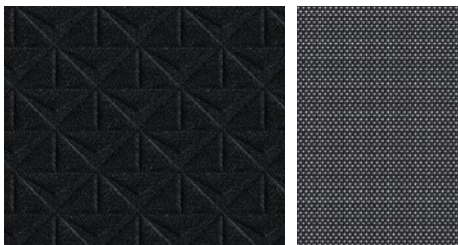
- Pearl White - **XKJ**
- Ceramic Grey - **XEX**
- Magnetic Blue - **XGZ**
- Gun Metallic - **GAQ**
- Fuji Sunset Red - **YAU**
- Iconic Yellow - **YAS**

## TRIMS



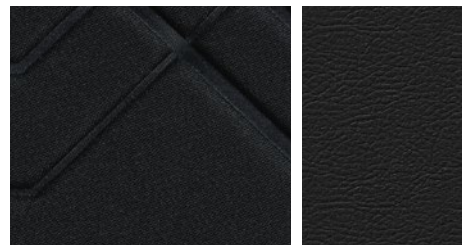
### ACENTA PREMIUM STANDARD

Black - Cloth Seats



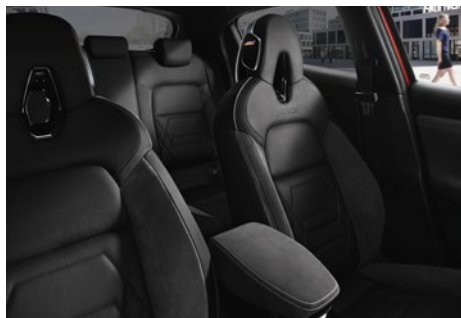
### N-CONNECTA STANDARD

Black - Syntech Leather seats with  
Melange Fabric inserts



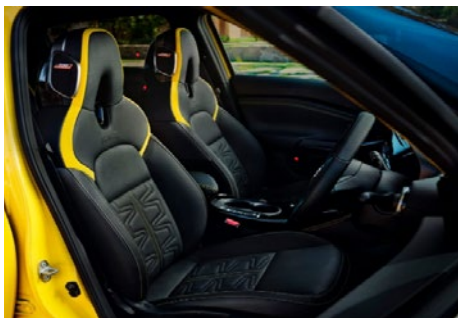
### TEKNA STANDARD

Black - Synthetic Leather seats with  
quilting and headrest hole finisher



### TEKNA+ INTERIOR PERSONALISATION PACK

Midnight Black Syntech Leather with Black  
Alcantara Inserts



### N-SPORT INTERIOR PERSONALISATION PACK

Icon Black Techical Grain Leather with  
Yellow Alcantara and Yellow Stitching

## WHEELS



17" Sakura wheels



17" Black &  
Diamond Cut Alloy  
wheels



19" Black Alloy  
Wheels



19" Alloy wheels  
with Deep 3D effect



19" Aero  
Alloy wheels



19" Black Akari  
Alloy wheels

# JUKE TECHNICAL SPECIFICATION

		1.0 DIG-t 114	1.0 DIG-t 114 DCT	Hybrid 143
MODEL		2WD Manual	2WD DCT	Hybrid
Available grades		Acenta Premium, N-Connecta, Tekna, Tekna+, N-Sport	Acenta Premium, N-Connecta, Tekna, Tekna+, N-Sport	N-Connecta, Tekna, Tekna+, N-Sport
Seating capacity	persons	5		

ENGINE			
Max. engine power	kW(PS)/rpm	84 (114)/5000	
Max. torque	Nm/rpm	200/3000	
Fuel type		Unleaded Petrol	

DRIVE TRAIN			
Transmission type		6-speed manual	7-speed DCT
Driven wheels		Front	

WHEELS				
Wheel size		Acenta Premium - 17" Sakura wheels, N-Connecta - 17" Alloy wheels, Tekna - 19" Alloy wheels, Tekna+ - 19" Alloy wheels with Deep 3D effect, N-Sport - 19" Black Akari Alloy wheels	Acenta Premium - 17" Sakura wheels, N-Connecta - 17" Alloy wheels, Tekna - 19" Alloy wheels, Tekna+ - 19" Alloy wheels with Deep 3D effect, N-Sport - 19" Black Akari Alloy wheels	N-Connecta - 17" Alloy wheels, Tekna - 19" Alloy wheels, Tekna+ - 19" Aero Alloy wheels, N-Sport - 19" Black Akari Alloy wheels
Tyre size		Acenta Premium & N-Connecta - 215/60 R17, Tekna, Tekna+ & N-Sport - 225/45 R19	Acenta Premium & N-Connecta - 215/60 R17, Tekna, Tekna+ & N-Sport - 225/45 R19	N-Connecta - 215/60 R17, Tekna, Tekna+ & N-Sport - 225/45 R19
Spare Wheel Tyre Size		Puncture repair kit standard. Accessory spare wheel: 145/90 R16		

WEIGHTS & DIMENSIONS					
Gross Vehicle Weight		kg	1700	1725	1810
Max. pay load		kg	Acenta Premium - 426, N-Connecta - 415, Tekna - 403, Tekna+ - 409, N-Sport - 409	Acenta Premium - 426, N-Connecta - 416, Tekna - 404, Tekna+ - 409, N-Sport - 409	N-Connecta - 394, Tekna - 381, Tekna+ - 387, N-Sport - 387
Max. trailer weight	braked	kg	1250	1250	750
	unbraked	kg	631	643	500
Overall length		mm	4210		
Overall width	excluding mirrors	mm	1800		
	including mirrors	mm	1983		
Overall height		mm	1593		
Turning circle	kerb to kerb	m	10.57		
Luggage space	max. length (rear seats up)	mm	757		
	max. length (rear seats down)	mm	1,477		
	min. width	mm	1,239		
	VDA	l	422		354
Luggage capacity	max. with folded seats to roof (VDA)	l	1,305		1,237

# JUKE TECHNICAL SPECIFICATION

		DIG-T 114					DIG-T 114 DCT					Hybrid 143			
MODEL		Manual					Automatic					Hybrid			
Available grades		Acenta Premium	N-Connecta	Tekna	Tekna+	N-Sport	Acenta Premium	N-Connecta	Tekna	Tekna+	N-Sport	N-Connecta	Tekna	Tekna+	N-Sport

FUEL CONSUMPTION (WLTP)															
Combined	l/100km	5.8	5.8	5.8	5.8	5.8	5.9	6.0	6.0	6.0	6.0	4.7	4.7	4.8	4.8
	mpg	48.7	48.7	48.7	48.7	48.7	47.9	47.1	47.1	47.1	47.1	60.1	60.1	58.9	58.9
Low Phase	l/100km	6.8	6.8	6.9	6.9	6.9	7.4	7.4	7.5	7.5	7.5	4.5	4.5	4.5	4.5
	mpg	41.5	41.5	40.9	40.9	40.9	38.2	38.2	37.7	37.7	37.7	62.8	62.8	62.8	62.8
Medium Phase	l/100km	5.4	5.4	5.4	5.4	5.4	5.5	5.5	5.6	5.6	5.6	3.9	4.1	4.1	4.1
	mpg	52.3	52.3	52.3	52.3	52.3	51.4	51.4	50.4	50.4	50.4	72.4	68.9	68.9	68.9
High Phase	l/100km	5.0	5.0	5.0	5.0	5.0	5.0	5.1	5.1	5.1	5.1	4.2	4.3	4.3	4.3
	mpg	56.5	56.5	56.5	56.5	56.5	56.5	55.4	55.4	55.4	55.4	67.3	65.7	65.7	65.7
Extra-High Phase	l/100km	6.3	6.2	6.3	6.2	6.2	6.4	6.4	6.4	6.4	6.4	5.6	5.6	5.7	5.7
	mpg	44.8	45.6	44.8	45.6	45.6	44.1	44.1	44.1	44.1	44.1	50.4	50.4	49.6	49.6

EMISSIONS															
CO <sub>2</sub> Combined (WLTP)	g/km	131	131	131	131	131	135	136	136	136	136	106	108	108	108
Emission Level		Euro6d Full													

PERFORMANCE															
Top Speed	mph	112										103			
Acceleration 0-62 mph (0-100Km/h)	secs	10.7					11.8					10.1			

WLTP figures shown are for comparability purposes; only compare figures with vehicles tested to the same technical procedures. Actual real-world driving results may vary depending on factors such as weather conditions, driving styles, vehicle load or any accessories fitted after registration.

# PRICE LIST

								COMPANY CAR DRIVERS <sup>^</sup>			
GRADE	ENGINE	TRANSMISSION	BASIC PRICE £	VAT £	TOTAL RETAIL £	ON THE ROAD PRICE £	CO <sub>2</sub>	P11D VALUE £	BIK %	MONTHLY £ BIK AT 20%	MONTHLY £ BIK AT 40%
ACENTA PREMIUM	DIG-T 114	6 speed Manual	£19,725.00	£3,945.00	£23,670.00	£24,265.00	131	£23,670.00	32%	£126.24	£252.48
	DIG-T 114 DCT	7 speed DCT (Auto-matic)	£20,975.00	£4,195.00	£25,170.00	£25,765.00	135	£25,170.00	33%	£138.44	£276.87
N-CONNECTA	DIG-T 114	6 speed Manual	£21,391.67	£4,278.33	£25,670.00	£26,265.00	131	£25,670.00	32%	£136.91	£273.81
	DIG-T 114 DCT	7 speed DCT (Auto-matic)	£22,641.67	£4,528.33	£27,170.00	£27,765.00	136	£27,170.00	33%	£149.44	£298.87
	Hybrid 143	4 speed for ICE + 2 speed for E-Motor	£24,458.33	£4,891.67	£29,350.00	£29,795.00	106	£29,350.00	27%	£132.08	£264.15
TEKNA	DIG-T 114	6 speed Manual	£22,641.67	£4,528.33	£27,170.00	£27,765.00	131	£27,170.00	32%	£144.91	£289.81
	DIG-T 114 DCT	7 speed DCT (Auto-matic)	£23,891.67	£4,778.33	£28,670.00	£29,265.00	136	£28,670.00	33%	£157.69	£315.37
	Hybrid 143	4 speed for ICE + 2 speed for E-Motor	£25,708.33	£5,141.67	£30,850.00	£31,295.00	108	£30,850.00	27%	£138.83	£277.65
TEKNA+	DIG-T 114	6 speed Manual	£23,808.33	£4,761.67	£28,570.00	£29,165.00	131	£28,570.00	32%	£152.37	£304.75
	DIG-T 114 DCT	7 speed DCT (Auto-matic)	£25,058.33	£5,011.67	£30,070.00	£30,665.00	136	£30,070.00	33%	£165.39	£330.77
	Hybrid 143	4 speed for ICE + 2 speed for E-Motor	£26,875.00	£5,375.00	£32,250.00	£32,695.00	108	£32,250.00	27%	£145.13	£290.25
N-SPORT	DIG-T 114	6 speed Manual	£23,808.33	£4,761.67	£28,570.00	£29,165.00	131	£28,570.00	32%	£152.37	£304.75
	DIG-T 114 DCT	7 speed DCT (Auto-matic)	£25,058.33	£5,011.67	£30,070.00	£30,665.00	136	£30,070.00	33%	£165.39	£330.77
	Hybrid 143	4 speed for ICE + 2 speed for E-Motor	£26,875.00	£5,375.00	£32,250.00	£32,695.00	108	£32,250.00	27%	£145.13	£290.25

<sup>^</sup>Representative examples only - subject to change.

# DIMENSIONS

- A:** Wheelbase: 2,636mm  
**B:** Overall length: 4,210mm  
**C:** Overall width: 1,800mm  
**D:** Overall height: 1,593  
Boot Capacity: 422 (Petrol)  
Boot Capacity: 354 (Hybrid)



# OPTIONS

	ACENTA PREMIUM	N-CONNECTA	TEKNA	TEKNA+	N-SPORT	BASIC £	VAT £	TOTAL £
OPTIONS								
19" Aero Wheel (Hybrid Only)				●	○	£0	£0	£0
PACKS								
Comfort Pack	○	○	●	●	●	£291.67	£58.33	£350
Advanced Safety Shield Pack		○	●	●	●	£833.33	£166.67	£1,000
ProPilot Pack		○	●	●	●	£1,083.33	£216.67	£1,300
Heat Pack		○	●	●	●	£329.17	£65.83	£395
PAINT								
Solid Paint (Fuji Sunset Red)	○	○	○			£0	£0	£0
Solid Paint (Arctic White)	○	○	○			£208.33	£41.67	£250
Metallic Paint	○	○	○			£620.83	£124.17	£745
Special/ Pearlescent Paint	○	○	○			£620.83	£124.17	£745
Two-Tone Metallic Paint		○	○			£954.17	£190.83	£1,145
Two-Tone Special/ Pearlescent Paint		○	○			£954.17	£190.83	£1,145
Two-Tone Metallic Paint				○	○	£0	£0	£0
Two-Tone Special/ Pearlescent Paint				○	○	£0	£0	£0

○ = Optional   ● = Standard



**Nissan. Innovation that excites.**

visit our website at: [www.nissan.co.uk](http://www.nissan.co.uk)

Follow Nissan on:



Dealer stamp:

Every effort has been made to ensure that the content of this publication is correct at the time of going to press (May 2023). This brochure has been produced featuring prototype vehicles exhibited at motor shows. In accordance with the company's policy of continuously improving its products, Nissan International reserves the right to change at any time the specification and the vehicles described and shown in this publication. Nissan dealers will be informed of any such modifications as quickly as possible. Please check with your local Nissan dealer to receive the most up-to-date information. Because of the limitations of the printing processes used, the colours shown in this brochure may differ slightly from the actual colours of the paint and interior trim materials used. All rights reserved. Reproduction in whole or part of this brochure without the written permission of Nissan International is forbidden.

Part Number: 9999954461. Printed in the UK.